

# EA63-2.5

## *Generator Automatic Voltage Regulator Operation Manual*



Self Excited Automatic Voltage Regulator  
Compatible with Basler AVC63-2.5\*

\* Use for reference only and not a genuine Basler product



**固也泰電子工業有限公司**  
**KUTAI ELECTRONICS INDUSTRY CO., LTD.**



**Headquarters** : No.3, Lane 201, Chien Fu ST., Chyan Jenn Dist., Kaohsiung, TAIWAN

**Tel** : + 886-7-8121771

**Fax** : + 886-7-8121775

**URL** : <http://www.kutai.com.tw>

# 1. INTRODUCTION

## Sensing Input

Voltage 120 VAC ( 90 ~ 130 VAC) or  
240 VAC (180 ~ 260 VAC)  
1 phase 2 wire, DIP switch selectable

Frequency 45 ~ 65 Hz, adjustment

## Output

Voltage Max. 50 VDC @ 120 VAC input  
Max. 63 VDC @ 240 VAC input

Current Continuous 2.5A  
Intermittent 4A for 60 sec

Resistance Min. 25 ohm

## Voltage Regulation

< ± 1% ( with 4% engine governing )

## Voltage Build-up

Residual voltage at AVR terminal > 5 VAC

## Thermal Drift

0.05% per °C change in AVR ambient

## External Volts Adjustment

±15% with 5K ohm 1 watt trimmer

## EMI Suppression

Internal electromagnetic interference filtering

## Unit Power Dissipation

Max. 10 watt

## Under Frequency Protection

Knee point adjustable range 45 ~ 55 Hz

## Dimensions

101mm L \* 69mm W \* 22mm H

## Weight

107g ± 2%

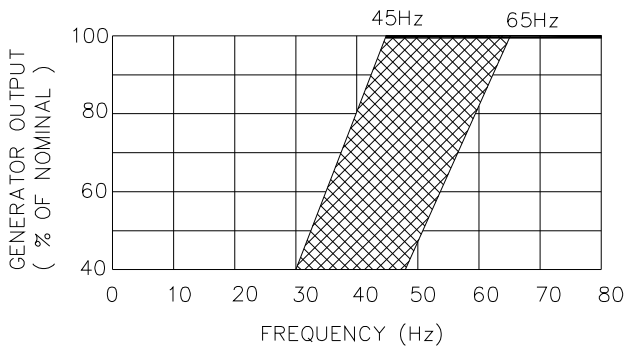


Figure 1 Typical Frequency Compensation Curves

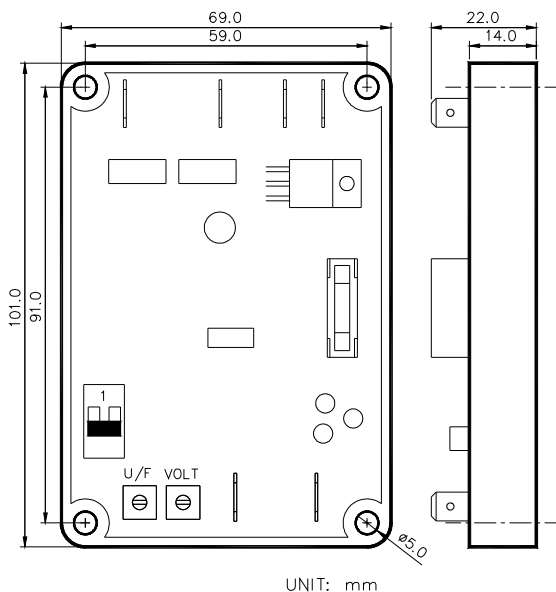


Figure 2 Outline Diagram

### V/Hz “CORNER FREQUENCY” SELECTION AND ADJUSTMENT (See Figure 1)

The corner frequency can be adjusted by the U/F ADJ rheostat on the AVR. Clockwise rotation results in raising the corner frequency (shifting the curve to the right). To set the UF rheostat :

1. Adjust the UF Rheostat fully CCW.
2. Start the generator and set at rated voltage.
3. Adjust the generator frequency to the desired kneepoint frequency.
4. Slowly adjust the U/F ADJ rheostat clockwise (CW) until the generator voltage just begins to decrease.

### WARNING

This Automatic Voltage Regulator is not equipped with loss-Sensing Protection function / Over Excitation Protection. An additional Over-Voltage Protection device for load may be required to avoid possible damage to the equipment or severe personal injury or death.

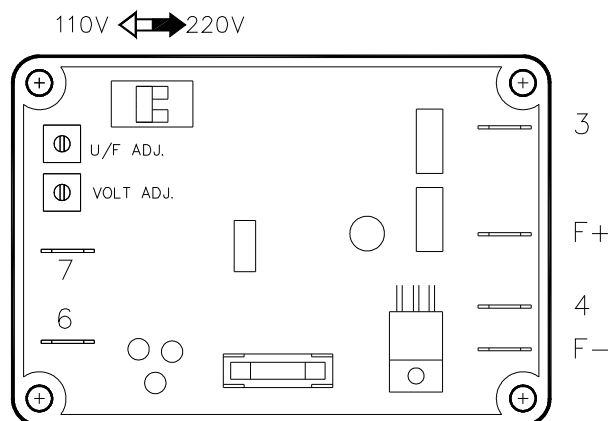


Figure 3 Potentiometer and Connector Locations

## 2. WIRING

### 2.1 Operation

The following system operation procedures provide instructions for adjusting the EA63-2.5 voltage regulator. Symptoms resulting from a faulty regulator and certain generator system problems are included, together with suggested remedies.

Complete the following steps before proceeding with the system start-up.

#### CAUTION

**Meggars and high potential test equipment must not be used. Incorrect use of such equipment could damage the semiconductors contained in the regulator.**

### 2.2 Preliminary Set-Up

1. Verify that the voltage regulator specifications conform with the generator system requirements.
2. Ensure the voltage regulator is correctly connected to the generator system.
3. Install the fuses as described in Fuses.
4. Set the regulator "VOLT ADJ" and external "VOLT ADJ" ( if used ) as follows:

Regulator "VOLT ADJ" : Fully CCW

Remote "VOLT ADJ" : Centered

### 2.3 System Start-Up

1. Perform preliminary set-up as described in the above paragraphs.

#### NOTE :

All voltage readings are to be taken with an average reading voltmeter.

2. Start prime mover and bring up to rated speed.

#### RESULT :

Voltage should build up. If not, perform Field Flashing.

3. Slowly adjust the regulator VOLT ADJ CW until the generator output voltage reaches the nominal value. If used, adjust the remote VOLT ADJ to set the generator voltage to the exact value desired.

#### RESULT:

Voltage should build up to rated value. If voltage does not build up to rated value, check generator for short or excessive load.

4. Check regulator under normal operating and loading conditions.

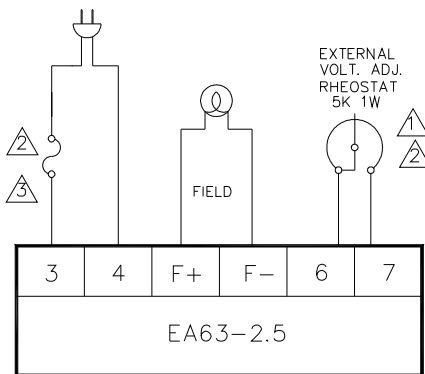
#### RESULT:


Voltage regulation should be better than  $\pm 1.0\%$  no-load to full-load. If regulation is not within this range, perform the following steps :

- Voltage reduction under load may be due to speed change from no load to full load. causing the frequency compensation (V/Hz) circuit to reduce voltage at lower frequencies.
- Replace voltage regulator.

## 2.4 Operational Test

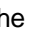
1. Connect the test setup as shown in the following figure, Operational Test. Do not apply power. Ensure that the light bulb is rated for 120V and is less than 100W.
2. Adjust the regulator VOLT ADJ and/or remote VOLT ADJ to maximum CW.
3. Apply 240V, 50/60 Hz power to the regulator. The light bulb should illuminate.



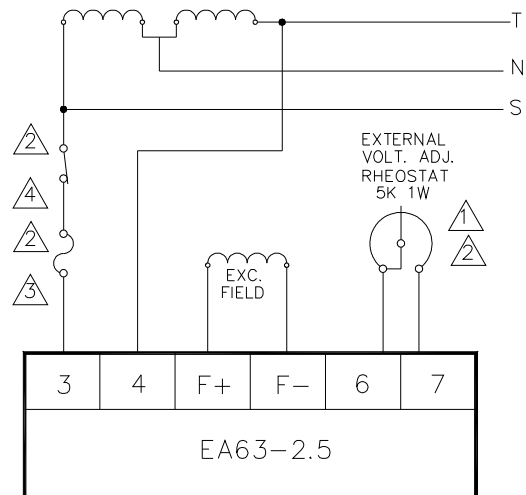
NOTE : IF GLASS TYPE FUSE IS USED,  
 ENCLOSE FOR SAFETY

Operational Test  
 Figure 4

4. Slowly adjust the regulator VOLT ADJ control CCW. At the regulation point, the light bulb should extinguish.

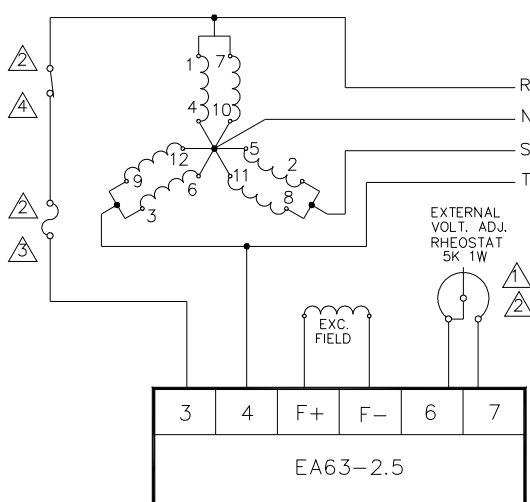
The following notes () apply to the interconnection diagrams :

- If external pot is not used, short terminals 6 and 7.
- Item not supplied by KUTAI ELECTRONICS.
- Select fuses with high interrupting capacity.
- Excitation On / Off Switch ( If used).



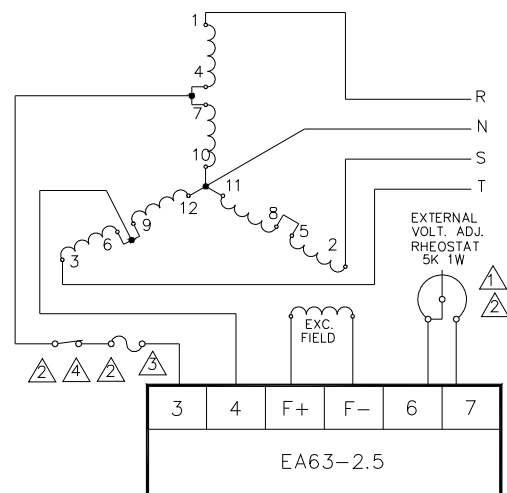
Interconnection Diagram, 120 / 240 V Nominal,  
 1-phase, 3-Wire

Figure 5



Interconnection Diagram, 120 / 208 V Nominal,  
 3-phase, 4-Wire, Wye Connection

Figure 6



Interconnection Diagram, 277 / 480 V Nominal,  
 3-phase, 4-Wire, Wye Connection

Figure 7