

EW05

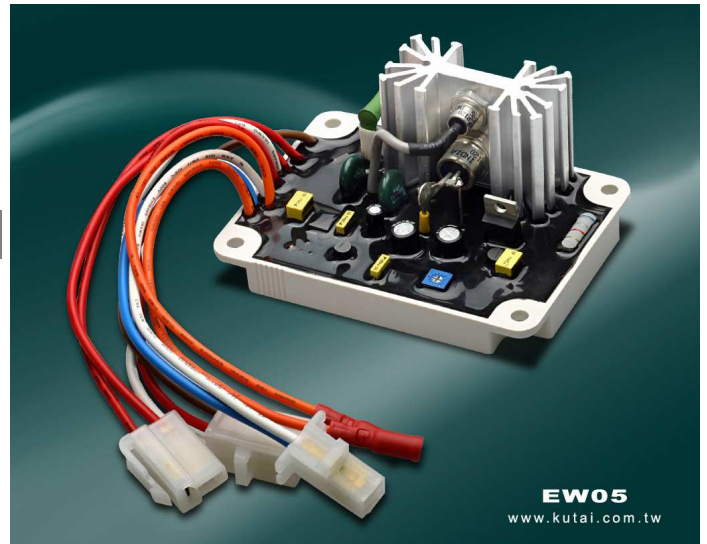
Self Excited Automatic Voltage Regulator

Compatible with 190 / 200 / 210 Type Welder / Generators Regulators*

*All manufacturer names, numbers, symbols and descriptions are used for reference purpose only and do not imply that any part is the product of these manufacturer.

Features

- For Use In 50/60 Hz Brushless Generators
- Single Phase Sensing, Same As Original
- External Welding Current Adjustment
- External AC Voltage Adjustment
- Provides Regulation For Welder & AC Output
- Automatic Welder Current Compensation
- Compatible with Original Modules



Specifications

Power Input 90~130 VAC 1 phase 2 wire 50/60 Hz

Output Voltage 45 VDC

Current Continuous 5A
Intermittent 15A for 10 sec.

Current Adjustment Welding current 50~190A

Current Compensation Automatic welder current compensation

Voltage Build-up Residual voltage at AVR Terminal > 2 VAC

Thermal Drift 0.05% per °C change in AVR ambient

Environment

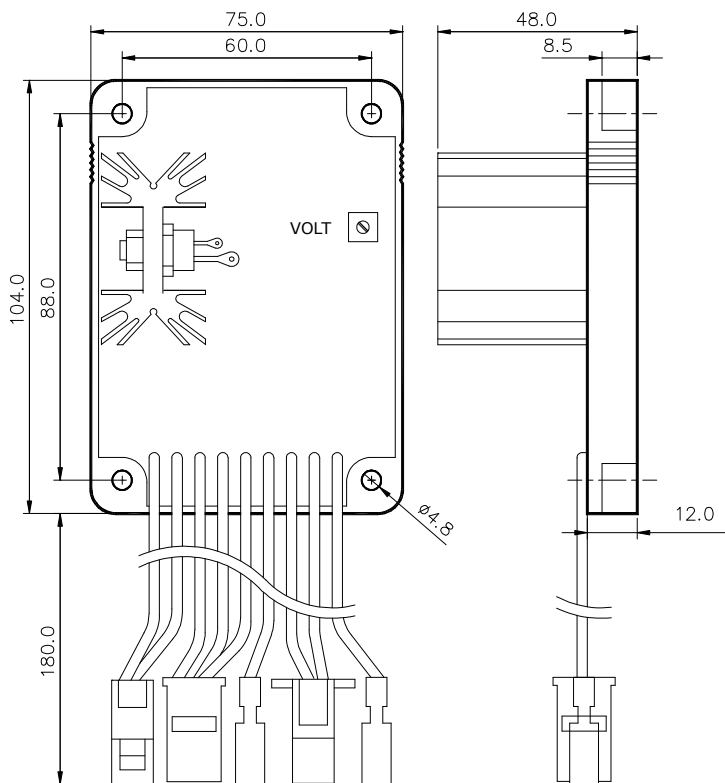
Operation Temperature -40~70 °C

Relative Humidity Maximum 90%

Storage Temperature -40~85 °C

Vibration 1.5G @ 5~30 Hz , 5.0G @ 30~500 Hz

Mechanical Specifications (Unit : mm)



Compatible Replacement for

Brand	Model
SUZUKI	CCW-210 , CCW-190H
HONDA	EW-190S
DAISHIN	SGW-200HX
KAIYU	SGW-190X

Physical Specification

Dimensions	104.0 (L) x 75.0 (W) x 48.0 (H) mm
Weight	224 g $\pm 2\%$